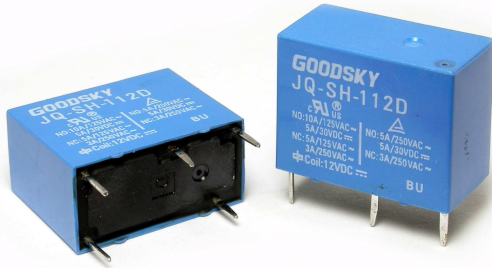


Main Feature



1. Small size with slim width.
2. SPST and SPDT Contact forms available.
3. Contact Capacity is 10A.
4. Surge Strength up to 8,000V.
5. UL Class F insulation available.
6. Halogen Free series available.
7. Comply with RoHS and REACH regulations



Contact Rating

Load Type	JQ (DM/TM/LM)	JQ (D/T)
Rated Load (Resistive)	10A 125VAC	NO: 10A 125VAC
	5A 250VAC	5A 250VAC
	5A 30VDC	5A 30VDC
	-	NC: 5A 125VAC
	-	3A 250VAC
Rated Carrying Current	5A	5A
Max. Allowable Voltage	AC 250V	AC 250V
	DC 30V	DC 30V
Max. Allowable Current	10A	10A
Max. Allowable Power Force	1,250VA	1,250VA
	150W	150W
Contact Material	Ag Alloy	Ag Alloy
Contact Form	SPST	SPDT

Application

Air Conditioner, Fan Control, Home Appliances, Timer and Thermal Control Application.

Performance (at Initial Value)

- Contact Resistance 100mΩMax.@1A,6VDC
- Operate Time..... 6 mSec. Max.
- Release Time 2 mSec. Max.
- Dielectric Strength:
 - Between Coil & Contact..... 4,000VAC at 50/60 Hz for one minute
 - Between Contacts 1,000VAC at 50/60 Hz for one minute
- Surge Strength..... 8,000V (between coil & contact 1.2x50μSec.)
- Insulation Resistance 100 MegaΩ Min.at 500VDC
- Max. On/Off Switching:
 - Electrical..... 6 Cycles per Minute
 - Mechanical 300 Cycles per Minute
- Temperature Range..... -30~+70°C
- Humidity Range..... 45~85% RH.
- Coil Temperature Rise..... 45°C Max.

- Vibration:
 - Endurance 10 to 55 Hz dual. amplitude width 1.5mm
 - Error Operation..... 10 to 55 Hz dual. amplitude width 1.5mm
- Shock:
 - Endurance 1,000 m/S²
 - Error Operation..... 100 m/S²
- Life Expectancy:
 - Mechanical 10⁷ Operations at No Load condition
 - Electrical 10⁵ Operations at Rated Resistive Load
- Weight About 5.6g

Safety Standard & File Number

- UL & C-UL E141060
- TÜV R50008011
- VDE 40010922

Coil Specification (at 20°C)

Coil Sensitivity	Nominal Voltage (VDC)	Nominal Current (mA)	Coil Resistance ($\Omega \pm 10\%$)	Power Consumption (W)	Pull-In Voltage (VDC)	Drop-Out Voltage (VDC)	Maximum Allowable Voltage (VDC)
JQ-D/DM	3	150	20	Abt. 0.45	75% Maximum	5% Minimum	120%
	5	91	55				
	6	75	80				
	9	50	180				
	12	37.5	320				
	24	18.8	1,280				
JQ-T/TM	3	133.3	22.5	Abt. 0.4	75% Maximum	5% Minimum	120%
	5	80	62.5				
	6	66.7	90				
	9	44.4	202				
	12	33.3	360				
	24	16.7	1,440				
JQ-LM	3	67	45	Abt. 0.2	75% Maximum	5% Minimum	120%
	5	40	125				
	6	33.3	180				
	9	22.5	400				
	12	16.7	720				
	24	8.3	2,800				

Ordering Information

JQ - SS - 1 12 D M F

Insulation System:

Nil: Standard Class

F: Class F

Contact Form:

Nil: One Form C (for D, T Type Only)

M: One Form A

Coil Sensitivity:

D: Standard DC Coil

T: Medium DC Coil

L: High DC Coil

Coil Voltage:

03: 3V, 05: 5V, 06: 6V, 09: 9V, 12: 12V, 24: 24V

Number of Pole:

1: One Pole

Type of Sealing:

SS: RT II Flux Proofed

SH: RT III Wash Tight

Type:

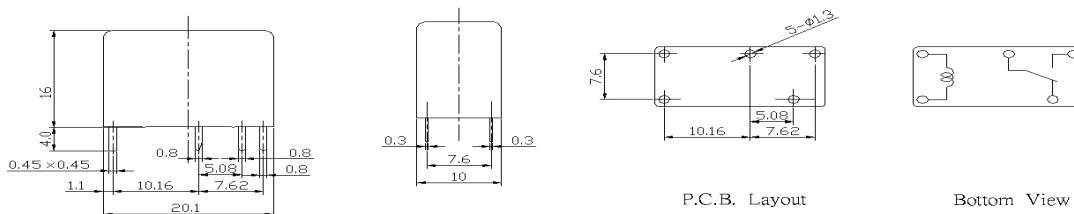
JQ

Classification

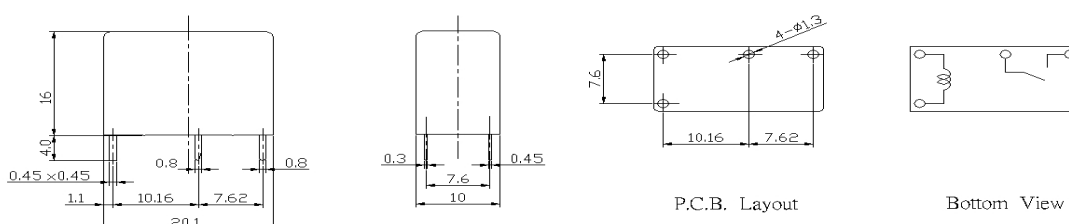
Model	JQ				
	1C		1A		
Contact Form					
Coil Type	Standard DC Coil	Medium DC Coil	Standard DC Coil	Medium DC Coil	High DC Coil
Flux Proofed	JQ-SS-1□□D	JQ-SS-1□□T	JQ-SS-1□□DM	JQ-SS-1□□TM	JQ-SS-1□□LM
Wash Tight	JQ-SH-1□□D	JQ-SH-1□□T	JQ-SH-1□□DM	JQ-SH-1□□TM	JQ-SH-1□□LM

Dimension ($\leq 5\text{mm} \pm 0.2\text{mm}$, $> 5\text{mm} \pm 0.3\text{mm}$, the tolerance of PCB thru hole: $+0.1\text{mm}$)

JQ-SS/SH-D/T/L



JQ-SS/SH-DM/TM/LM



V.01DS