

Main Feature

1. 2-Poles and 3-Poles versions available with switching current 10A.
2. Socket type. Easy to mount.
3. Both AC and DC coil available.
4. Low coil power consumption with high response time.
5. High reliability and long life with better vibration and shock resistance.



Contact Rating

Load Type	RK-2P	RK-3P
Rated Load (Resistive)	10A 240VAC	10A 240VAC
Rated Carrying Current	10A	10A
Max. Allowable Voltage	AC 240V	AC 240V
	DC 110V	DC 110V
Max. Allowable Current	10A	10A
Max. Allowable Power Force	2400VA	2400VA
	364W	364W
Contact Material	Ag Alloy	Ag Alloy
Contact Form	DPDT	3PDT

Application

Vending Machine, Cooking Appliances, Office Machine, Domestic Appliances, Control Equipment...etc.

Performance (at Initial Value)

- Contact Resistance 100mΩMax. @1A,6VDC
- Operate Time..... 25 mSec. Max.
- Release Time 25 mSec. Max.
- Dielectric Strength:
 - Between Coil & Contact..... 1,000VAC at 50/60 Hz for one minute
 - Between Contacts 1,000VAC at 50/60 Hz for one minute
- Surge Strength..... 3,000V (between Coil & Contact 1.2x50μSec.)
- Insulation Resistance 100 MegaΩ Min. at 500VDC
- Max. On/Off Switching:
 - Electrical..... 6 Cycles per Minute
 - Mechanical 300 Cycles per Minute
- Temperature Range..... -10~+40°C
- Humidity Range 35~85% RH.

- Vibration:
 - Endurance 10 to 55 Hz dual amplitude width 1.5mm
 - Error Operation..... 10 to 55 Hz dual amplitude width 1.5mm
- Shock:
 - Endurance 1,000 m/S²
 - Error Operation..... 100 m/S²
- Life Expectancy:
 - Mechanical 10⁷ Operations at No Load condition
 - Electrical 10⁵ Operations at Rated Resistive Load
- Weight About 2P : 72.6 g
3P : 81.2 g

Accessories & Sockets

RK-2P

- PF-083A/AE See Page 177
- PF-083BE See Page 177

RK-3P

- PF-113A/AE See Page 178
- PF-113BE See Page 178

Safety Standard & File Number

- UL & C-UL E175730

Coil Specification (at 20°C)

Coil Sensitivity	Coil Voltage Code	Nominal Voltage (VAC/VDC)	Nominal Current (mA)		Coil Resistance (Ω±10%)	Power Consumption		Pull-In Voltage	Drop-Out Voltage	Max. Allowable Voltage
			50 Hz	60 Hz		50HZ	60HZ			
AC Coil	01	6	404.00	360.00	5.3	2.40VA	2.16VA	80% Maximum	30% Minimum	110%
	02	12	169.63	139.53	21.5	2.04VA	1.67VA			
	03	24	69.74	59.84	91	1.67VA	1.44VA			
	06	120	20.10	16.40	1,620	2.41VA	1.97VA			
	08	240	7.82	6.68	7,100	1.87VA	1.6VA			
DC Coil	02	12	126		95	Abt. 1.5W	80% Maximum	10% Minimum	110%	
	03	24	56		430					
	04	48	29.5		1,630					
	05	110	16.2		6,800					
	06	120	17.6		6,800					

Ordering Information

RK - 2 01 D M L T

Touch Button:

Nil: Without Test Button

T: With Test Button

LED:

Nil: Without LED

L: With LED Selection (Use Polarity LED)

Z: Coil Parallel with Diode & the Positive Pole "+" On #2 Terminal

X: Coil Parallel with Diode + LED & the Positive Pole "+" On #2 Terminal

Contact Form:

Nil: Form C

M: Form A

B: Form B

Coil Type:

D: Standard DC

A: Standard AC

Coil Code:

01: 6V, **02:** 12V, **03:** 24V, **04:** 48V

05: 110V, **06:** 120V, **08:** 240V

Number of Pole:

2: 2 Poles

3: 3 Poles

Type:

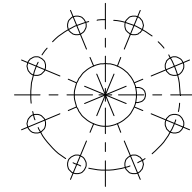
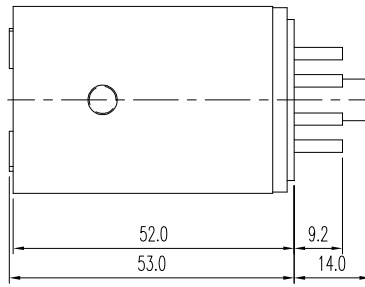
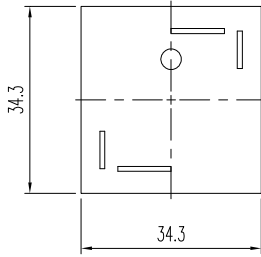
RK

Classification

Model	RK					
Coil Type	AC			DC		
Number Of Poles	2 Poles		3 Poles	2 Poles		3 Poles
Contact Form	2C / 3C	2A / 3A	2B / 3B	2C / 3C	2A / 3A	2B / 3B
Terminal Type	RK-2/3□A□□	RK-2/3□AM□□	RK-2/3□AB□□	RK-2/3□D□□	RK-2/3□DM□□	RK-2/3□DB□□
LED	RK-2/3□□A/AL□	RK-2/3□□AM/AML□	RK-2/3□□AB/ABL□	RK-2/3□□D(DL/Z/X)□	RK-2/3□□DM(DML/Z/X)□	RK-2/3□□DB(DBL/Z/X) □
Touch Button	RK-2/3□□□□T	RK-2/3□□□□T	RK-2/3□□□□T	RK-2/3□□□□T	RK-2/3□□□□T	RK-2/3□□□□T

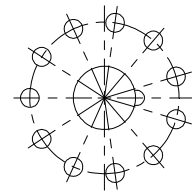
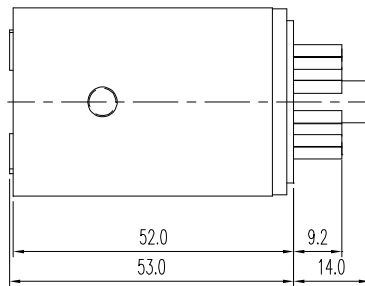
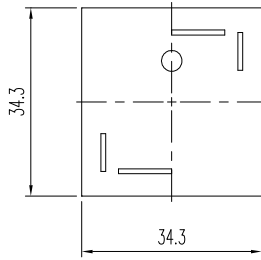
Dimension ($\leq 5\text{mm} \pm 0.2\text{mm}$, $> 5\text{mm} \pm 0.3\text{mm}$, the tolerance of PCB thru hole: $+0.1\text{mm}$)

RK-2P



Bottom view

RK-3P



Bottom view

Wiring diagrams (Bottom view)

RK-2P		
<p>RK-2□□D(A)□□</p>	<p>RK-2□□D□L□</p>	<p>RK-2□□D□Z□</p>
<p>RK-2□□D□X□</p>	<p>AC Coil Model With LED</p>	
RK-3P		
<p>RK-3□□D(A)□□</p>	<p>RK-3□□D□L□</p>	<p>RK-3□□D□Z□</p>
<p>RK-3□□D□X□</p>	<p>AC Coil Model With LED</p>	